



TRUE STAR
ENERGY



Revolutionizing Fueling Stations on Tribal Lands

Many Tribal territories are perfectly positioned to take advantage of NEVI funds, and other grants and incentives, for the development of EV Charging. Imagine these stations along bustling interstates, in areas where alternative fuel sources, especially EV charging stations, are scarce or non-existent. The establishment of these facilities is expected to trigger a wave of economic benefits.

With the anticipated significant increase in EV traffic over the next 5-10 years, there is an unprecedented amount of funding available through grants, incentives, rebates, etc. Our model maximizes these funds by combining multiple sources. The EV Charging aspect capitalizes on grants, rebates, and incentives specifically aimed at increasing EV Charging availability. Then we add the solar and battery components which have their own funding and incentives.



Our Approach

The focus of these stations will be on DC Fast Chargers. These are 300KW machines, or higher, capable of charging the average passenger vehicle in 30 minutes and the average Heavy Duty Truck in 90 minutes.

A typical design will start with 6-10 Charging Stations, but each location will be unique. We will offer a customized layout based on factors such as traffic patterns and estimated utilization of EV (passenger and/or trucking) in that area.



Existing Tribal Owned Travel Centers

Project Planning (Month 1-3)

Installation Phase (Month 4-5)

Operation Phase (Month 6)

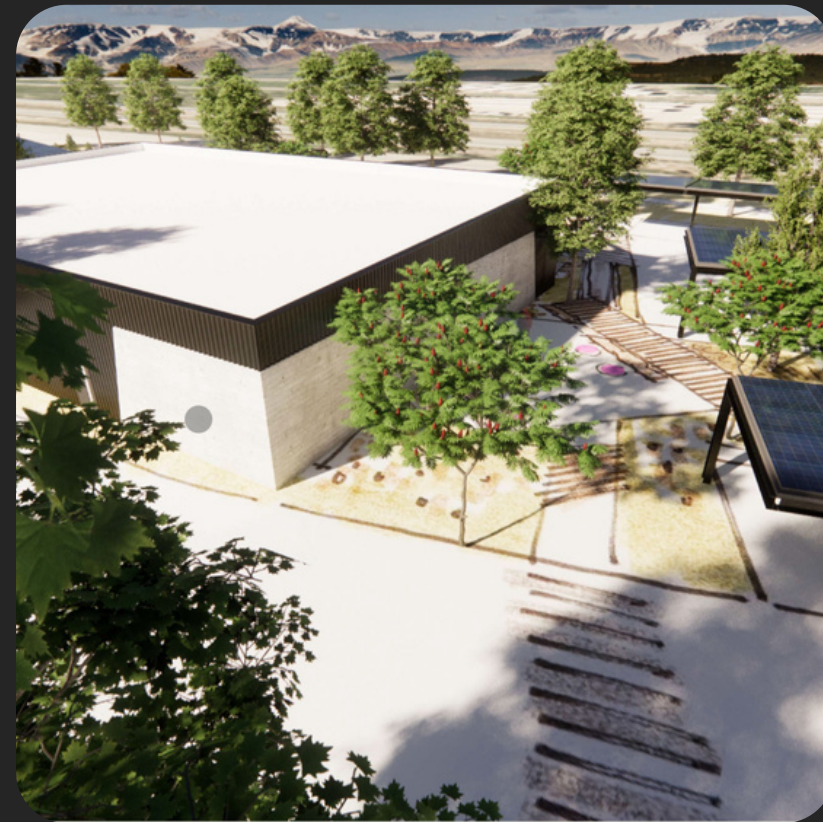
Filing for ITC (Month 7)

Receipt of ITC as Direct Pay (Month 8-9)

One initial step a Tribe may consider is identifying existing stations located off Interstates. Many of these locations, which include travel stops, truck stops, and gas stations, present potential opportunities for adding EV Rapid Charging to gain new customers and monetizing existing parking spaces.

Given the power availability at the site, it could be possible to install several DC Fast Charging stations. For example, 4 stations, capable of charging 8 vehicles simultaneously, would require 1200 Amps. If this level of power is readily accessible on the property, these stations could be set up and operational, most likely in less than 60 days.

The Inflation Reduction Act and other grant funding is readily available to tribes for these upgrades.



True Star Alternative Fuel Station

If tribe has land that they are considering for development, it could be an excellent opportunity for the establishment of Alternative Fuel Stations (AFS).

AFS is envisioned as a traveler's oasis, showcasing contemporary design, spotless facilities, featuring healthy food options and barista. Expect solar-panel covered parking for bright, safe surroundings with 24/7 staff presence.

True Star is committed to showcasing local artisans and farmers in their retail offerings.

Project Timeline

Project Planning (Month 1-3)

Securing Financing (Month 4)

Construction Phase (Month 5-16)

Operation Phase (Month 17)

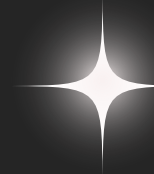
Filing for ITC (Month 18)

Receipt of ITC as Direct Pay (Month 19-20)

Land Requirements

Land Size: min 5 acres

High Traffic Area



TRUE STAR ENERGY - A NATIVE OWNED BUSINESS

TRUE STAR ENERGY is proud to offer a variety of sustainable business solutions to Tribal Nations, tailored to fit the unique needs and resources of your community. Here are some of the products we can provide, depending on the size and location of your land:



Solar Installation & BESS

Increase energy independence with solar energy. Battery storage ensures a steady supply of power. Decrease business operating costs and reduce household utility cost with

Land Required: 5+ Acres

Plastic Conversion

Carbon Conversion Group can assist your community in reducing its environmental impact by turning plastic waste into useful materials such as graphene, graphite, and hydrogen gas.

Land Required: 5+ Acres

ECO Data Centers

Data centers are crucial. We can help develop and host eco data centers minimizing environmental impact while providing efficient, reliable services.

Land Requirement: Varies

(If combined with Solar/BESS)

MIX & MATCH Income Driven Business Opportunities

These solutions can be mixed and matched to suit your community's needs and resources.

With TRUE STAR ENERGY, you can build a sustainable future for your community.

These businesses are designed to be owned and operated by tribes with support from TRUE STAR until the Tribe is fully trained and comfortable with operations.

Resources

Tribal Energy Loan Program:

Loan guarantee may now cover 100% of debt. In addition to continuing to allow for partial loan guarantees, makes permanent the ability for borrowers to apply for direct loans through TELGP via the U.S. Treasury Federal Financing Bank (FFB).

Indian Community Development

Block Grant (ICDBG) Program:

Fixtures and equipment for EV charging stations can be funded as part of an activity to improve the community's public services and facilities. This funding can be used for the acquisition, construction, reconstruction, rehabilitation, or installation of public facilities and improvements.

Energy and Mineral Development Program Grant:

This opportunity provides financial aid for evaluating energy and mineral resource development potential. It could also involve designing distributed electric generation/storage assets for EV charging networks.

National Electric Vehicle Infrastructure (NEVI) Formula Program:

The NEVI Formula Program provides dedicated funding to States for strategic deployment of EV charging infrastructure. Once the national network is established, the funding can be used on any public road or other publicly accessible locations, including Tribal Lands.



Resources

Electric Infrastructure Loan and Loan Guarantee Program: Supports improvements and replacements required for better electric service in rural areas. Encourages demand side management and energy conservation programs. Supports both on-grid and off-grid renewable energy systems.

National Infrastructure Project Assistance Program: Also known as "Mega Grants" the program supports large, complex projects that are difficult to fund by other means and likely to generate national or regional economic, mobility, or safety benefits.

Electric Infrastructure Loan and Loan Guarantee Program: Makes insured loans and loan guarantees to finance the construction of electric distribution, transmission, and generation facilities, including system improvements and replacements required to furnish and improve electric service in rural areas, as well as demand side management, energy conservation programs, and on-grid and off-grid renewable energy systems.

Additional Links

[IRA TRIBAL GUIDE BOOK](#)

[BUREAU OF INDIAN AFFAIRS, TRIBAL RENEWABLE ENERGY DEVELOPMENT](#)



CONTACT US



www.truestarenergy.com



Info@truestartenergy.com



TRUE STAR ENERGY - A NATIVE OWNED BUSINESS